

the history of stresscrete

Stresscrete was born from Certified Concrete's involvement in pre casting. Certified Concrete was established in 1938 as a joint venture between Fletcher Holdings and Winstone Ltd and later became NZ's first ready mixed concrete company. Certified Concrete first commenced precast concrete manufacture in the mid 1940's. The main line of production was concrete poles. The Stresscrete name was a united brand under which several companies marketed themselves (including Certified Concrete) and shared technology.

By the early 1950's Roberts Prestressed appeared with plants in Tauranga, Hamilton and Bulls. By 1954 a company called Waikato Poles appeared producing Power Poles, beams and piles in Paeroa and later Opotiki.

The company name Stresscrete (Waikato) was first used in about 1956/57 when Waikato Poles changed its name. The company had been formed to make prestressed power poles for the Thames Valley Electric Power Board.

In 1958 Certified Concrete created a new company called Prestressed Concrete (NZ)Ltd. The company quickly earned an

international reputation for pioneering developments in the growing industry.

After successfully producing prestressed poles, Stresscrete (Waikato) then commenced in making bridge beams and piles and opened another factory in Opotiki. In 1962 Certified had purchased the opposition Roberts factory at Bulls and in 1963 Stresscrete (Waikato) took over the Te Rapa factory leaving Roberts Concrete's only factory at Mount Maunganui.

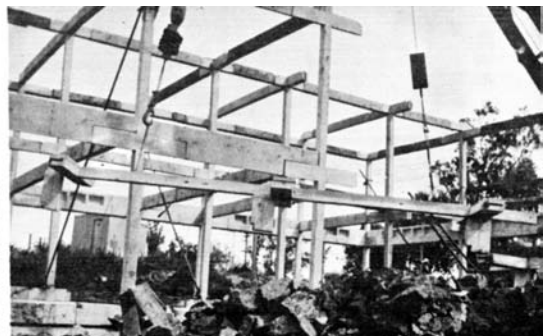
By 1965 the structure and direction of Prestressed Concrete (The Certified Concrete company) changed when Stresscrete Industries Ltd was formed, and a programme of investing in prestressing businesses throughout the country commenced. Those businesses, mostly bought as partial shareholdings with local owners, are now the basis of many of today's Stresscrete -Hamilton, Auckland, Otaki, Bulls, Christchurch and Invercargill plants.

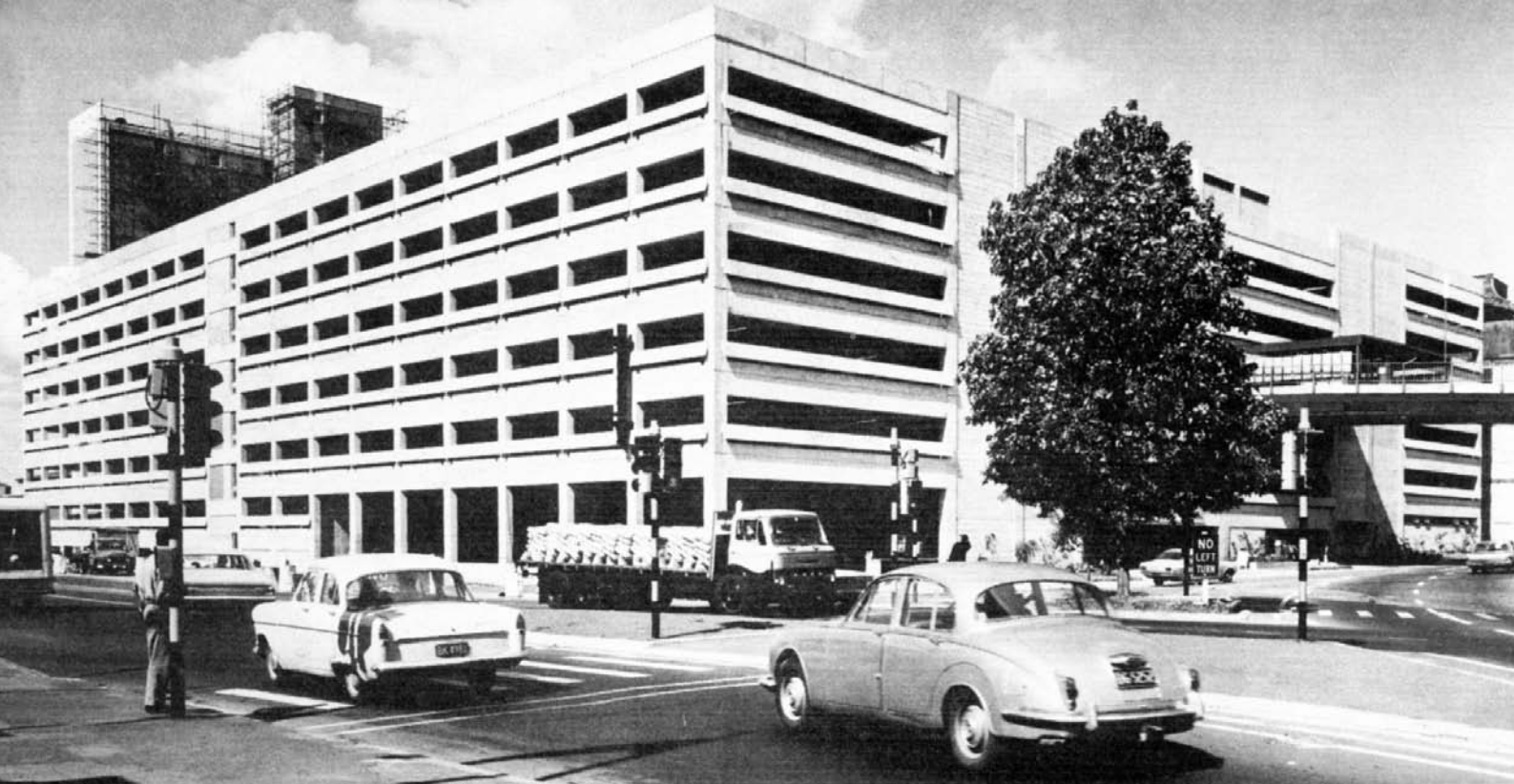
By 1969 all precast companies involved with Certified Concrete changed their names to Stresscrete, and the independents were known as associated companies but still used the Stresscrete brand and technology.

The 100% Certified Concrete owned plants were Auckland, Bulls, Lower Hutt (Melling) - all other plants had varying degrees of shareholding (Including Firth Rotorua) with only Roberts in Tauranga and Busck in Whangarei having no Certified financial interest - Stresscrete became a national monopoly in the Structural prestressed market.

1969 Company listing;
Stresscrete Auckland (Lunn Ave)
Stresscrete Wellington
Stresscrete Manawatu (Bulls)
Stresscrete Division, Certified Concrete, Christchurch
Stresscrete Waikato (Hamilton)
Stresscrete Waikato (Paeroa)
Firth Stresscrete Rotorua
Stressed Products Stratford
Stresscrete Invercargill
Busck-Stresscrete Kaitaia
R.T. Scott Blenheim
R.T. Scott Nelson
West Coast Stresscrete
Greymouth
Roberts Prestressed Mt Maunganui

Early 1972 saw yet another name change and re-shuffle when the Auckland, Wellington, Bulls and Christchurch plants all became "Stresscrete Division, Certified Concrete". Then in 1975 Stresscrete Industries was created and all minority





Above: Auckland's Downtown carpark was a cutting edge design in 1969 with its 450,000sq ft, 16-half-storey structure with 18,500 tons of Stresscrete precast elements housing 1,600 cars. It was erected in just nine months.

Below: 1971. Tiwai Aluminium smelter at Bluff comprising of 2 x 2,000 ft and 2 x 1,000ft buildings these massive structures included nearly 11,000 tons of Stresscrete precast elements that were produced over a 10 month period.

Opposite page: Precasting in New Zealand 60 years ago. A building manufactured and erected by Certified Concrete Ltd in the mid 1940s. Note the complete absence of welding and joints made at the point of contraflexure. Reinforced precast Single Tees were used as floor units (not shown).

shareholders were bought out by Certified Concrete which at that stage was still owned by Fletchers and Winstones. In 1978 Fletchers and Winstones separated their involvement with Fletchers taking ownership of Stresscrete and Winstone the Auckland Ready Mix business. At this stage the associated companies were no longer allowed to trade under the Stresscrete brand and were dropped.

By 1980 a new company called Fletcher Concrete brought Certified, Firth and Stresscrete under one organisation. The new acquisitions initially traded under the name Fletcher Concrete, but the name was later changed to Firth Industries. In 1984 each region became autonomous and traded as Firth Stresscrete.

Since that time Stresscrete has remained part of the Fletcher organisation and has a very close association with Firth. Currently Stresscrete is part of the Concrete and infrastructure group within Fletcher Building.

Stresscrete has always been recognised as the leading NZ company in the precast industry, and the name and identity have always been retained. Stresscrete operates as an independent business unit within Fletcher Building.

